

2000 2004 2005 2006 2007 2008 2009 2010 2011 2012 2013 2014 2015 2016 2017 2018 2019

Beginning – in the village wildflower meadows of Transylvania

Darwin and Orange enable us to start.

We do local activities with farmed landscapes and communities

National profile raised by visits of Prince Charles and Slow Food founder Carlo Petrini.

We begin to do national level activities in close cooperation with other conservation NGOs

ADEPT influence reaches Europe. We link up with wider European policy coalitions on High Nature Value farmed landscapes. We become one of the leading NGOs in Europe working for small-scale farmed landscapes and communities

ADEPT has increasing policy influence at national level, so that local lessons are spread nationally. And increasing influence at EU level. Never forgetting our base: practical projects on the ground

ADEPT involved in several international projects. We keep innovating and thinking of new ways of bringing local benefits

ADEPT's combination of practical work and policy work attracts interest: seems to be a very unusual formula for success. We win top prize at European level 2 years in succession for innovative communication with farmers. This helps us continue to influence policy at EU level

ADEPT reviews strategy, with help of Fauna and Flora International: goals to consolidate local and national results in the long-term by building capabilities of ADEPT team, and by establishing associations and confederations to give a voice to small-scale farmers

ADEPT wins top EU prize for bringing benefits to communities in protected areas, and top Council of Europe Landscape award

ADEPT purchases land and makes first steps into practical demonstration on how sustainable land management can contribute to biodiversity protection

ADEPT diversifies streams of income by implementing new types of projects focused on social economy and business development

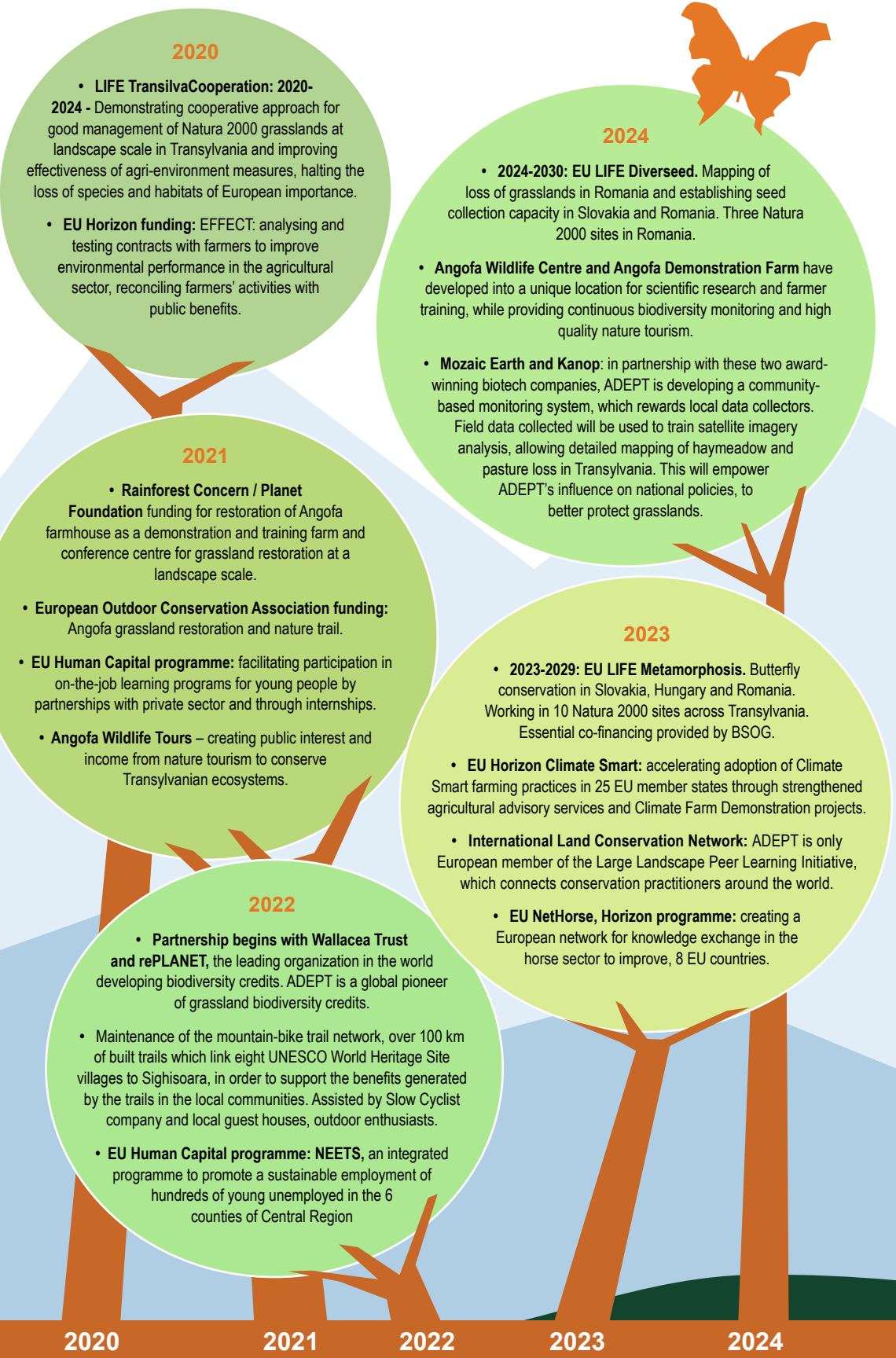
ADEPT secures vital core funding for cofinancing of biodiversity and community development projects, raising ADEPT's 'reach' and capacity to a new level

ADEPT assists development of local associations between farmers and producers as a way to increase income for local communities

Journey

Adept Timeline





2020

- **LIFE TransilvaCooperation: 2020-2024** - Demonstrating cooperative approach for good management of Natura 2000 grasslands at landscape scale in Transylvania and improving effectiveness of agri-environment measures, halting the loss of species and habitats of European importance.
- **EU Horizon funding: EFFECT**: analysing and testing contracts with farmers to improve environmental performance in the agricultural sector, reconciling farmers' activities with public benefits.

2021

- **Rainforest Concern / Planet Foundation** funding for restoration of Angofa farmhouse as a demonstration and training farm and conference centre for grassland restoration at a landscape scale.
- **European Outdoor Conservation Association funding:** Angofa grassland restoration and nature trail.
- **EU Human Capital programme:** facilitating participation in on-the-job learning programs for young people by partnerships with private sector and through internships.
- **Angofa Wildlife Tours** – creating public interest and income from nature tourism to conserve Transylvanian ecosystems.

2022

- **Partnership begins with Wallacea Trust and rePLANET**, the leading organization in the world developing biodiversity credits. ADEPT is a global pioneer of grassland biodiversity credits.
- Maintenance of the mountain-bike trail network, over 100 km of built trails which link eight UNESCO World Heritage Site villages to Sighisoara, in order to support the benefits generated by the trails in the local communities. Assisted by Slow Cyclist company and local guest houses, outdoor enthusiasts.
- **EU Human Capital programme: NEETS**, an integrated programme to promote a sustainable employment of hundreds of young unemployed in the 6 counties of Central Region

2024

- **2024-2030: EU LIFE Diverseed.** Mapping of loss of grasslands in Romania and establishing seed collection capacity in Slovakia and Romania. Three Natura 2000 sites in Romania.
- **Angofa Wildlife Centre and Angofa Demonstration Farm** have developed into a unique location for scientific research and farmer training, while providing continuous biodiversity monitoring and high quality nature tourism.
- **Mozaic Earth and Kanop:** in partnership with these two award-winning biotech companies, ADEPT is developing a community-based monitoring system, which rewards local data collectors. Field data collected will be used to train satellite imagery analysis, allowing detailed mapping of haymeadow and pasture loss in Transylvania. This will empower ADEPT's influence on national policies, to better protect grasslands.

2023

- **2023-2029: EU LIFE Metamorphosis.** Butterfly conservation in Slovakia, Hungary and Romania. Working in 10 Natura 2000 sites across Transylvania. Essential co-financing provided by BSOG.
- **EU Horizon Climate Smart:** accelerating adoption of Climate Smart farming practices in 25 EU member states through strengthened agricultural advisory services and Climate Farm Demonstration projects.
- **International Land Conservation Network:** ADEPT is only European member of the Large Landscape Peer Learning Initiative, which connects conservation practitioners around the world.
- **EU NetHorse, Horizon programme:** creating a European network for knowledge exchange in the horse sector to improve, 8 EU countries.

2020

2021

2022

2023

2024

Angofa Wildlife Centre becomes a research hub for regional grassland biologists, and centre for educational activities related to nature conservation. The AWC offers schoolchildren and young locals the opportunity to work alongside expert biologists.

Development begins of Europe's first grassland biodiversity and carbon credits, which will help bring finance to support sustainable farming systems.

Two major 7-year LIFE projects begin, working in 12 protected areas to achieve butterfly conservation and grassland restoration. Innovative mapping begins to accurately assess loss of grassland habitats.

Restored Angofa demonstration farm offers space for farmer training on biodiversity, support for traditional systems including new technology. The farm provides case studies in land management, offered freely for wider use.



FUNDATIA
ADEPT



2004 - 2024

Mission:

To protect the High Nature Value Farmed Landscapes of Transylvania, working with and supporting the small-scale farming communities that created them.

Vision:

Tarnava Mare in Transylvania is a landscape of inspiration, known for its beauty, high biodiversity and cultural values, maintained by a thriving local economy which is based on sustainable use of natural resources and local enterprises, which offer high quality experiences for locals and visitors alike.

Our journey started over 20 years ago when we realised that the High Nature Value landscapes of Transylvania and the small rural communities that shaped them over the centuries and maintain them today, unique in the world, are under threat.

We set out then to shaping an economic future where these communities and nature-rich landscapes can survive in the 21st century, without sacrificing their productivity. The farming system that is still working in the Tarnava Mare area represents an important model of sustainable and productive agriculture, that generates many environmental, economic and social benefits.

We hope the projects carried out thus far are proof of our success in doing so!

Thank you for being part of this extraordinary journey.

You can learn more about our projects and how to support us by visiting:

www.fundatia-adept.org

